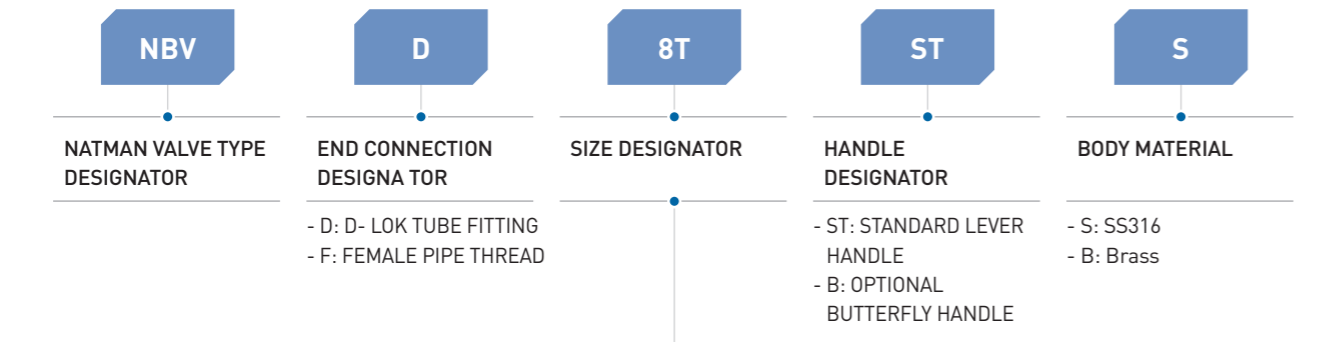


How to Order



NPT(ISO/BSP)						Tube										
Thread(In)	1/4	3/8	1/2	3/4	1	Fractional Tube Designator	O.D.(In.)	1/4	5/16	3/8	1/2	5/8	3/4	7/8	1	
Designator	4N(R)	6N(R)	8N(R)	12N(R)	16N(R)		Q.D.(mm)	6	8	10	12	15	16	22	25	
						Metric Tube Designator	6M	8M	10M	12M	15M	16M	22M	25M		

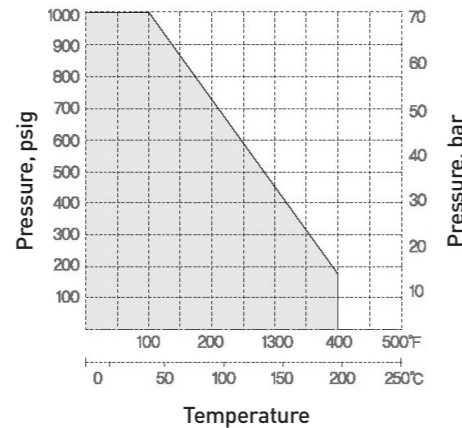
Factory Testing

Every NATMAN 100 Series Ball valve is adjusted for factory testing at 1000 psig (69 bar) with nitrogen. Seat tests have a maximum allowable leak rate of 0.1 std cm³/min. The packing is tested with nitrogen for no detectable leakage.

Cleaning and Packaging

All valves are cleaned and packaged in accordance with D-Lok standard cleaning and packaging procedures.

Pressure-Temperature Ratings



Safety in Valve Selection

Selections of valve function and rating, proper installation, material compatibility, operation and maintenance of these valves are the responsibility of the user.

The system design, application must be taken into consideration to ensure optimal performance and safety. We accept no liability for any improper selection, installation, operation or maintenance.

NATMAN[®]

BALL VALVES

2-WAY 100 SERIES

For working pressure up to 1000 psig (69 bar)
 For use with 1/4"~1" tube and piping system



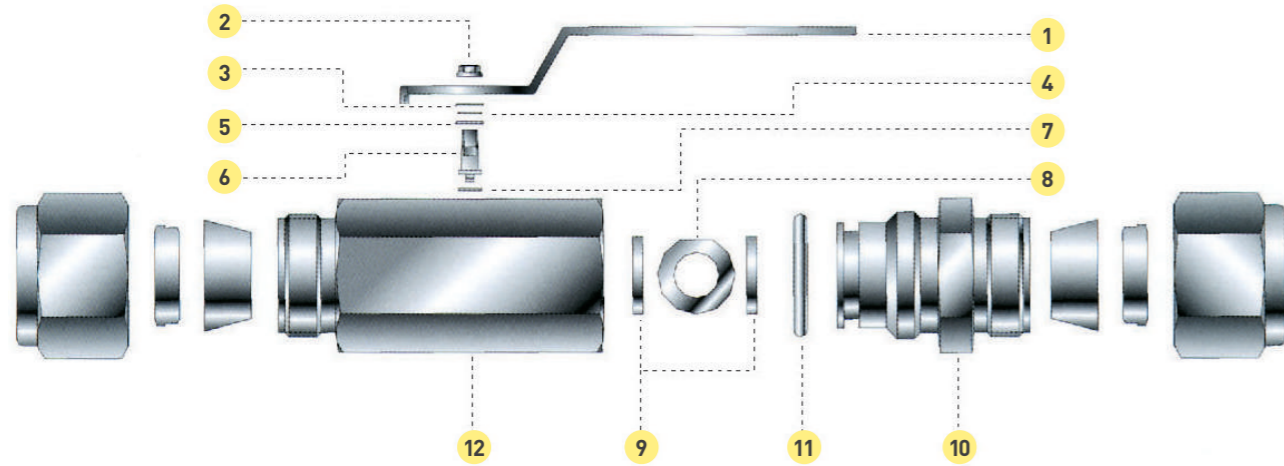
Design Feature

- Compact design with one piece hexagon body construction.
- 2-way straight pattern.
- Free floating ball design provides seat wear compensation.
- Micro-finished ball provides a leak-tight seal.
- Positive and safe handle stop.
- Low operating torques with stainless steel lever handle.
- Provide quick 1/4 turn on-off control.
- Color coated stainless steel lever handle.
- Handle indicate flow direction.
- Various end connections.

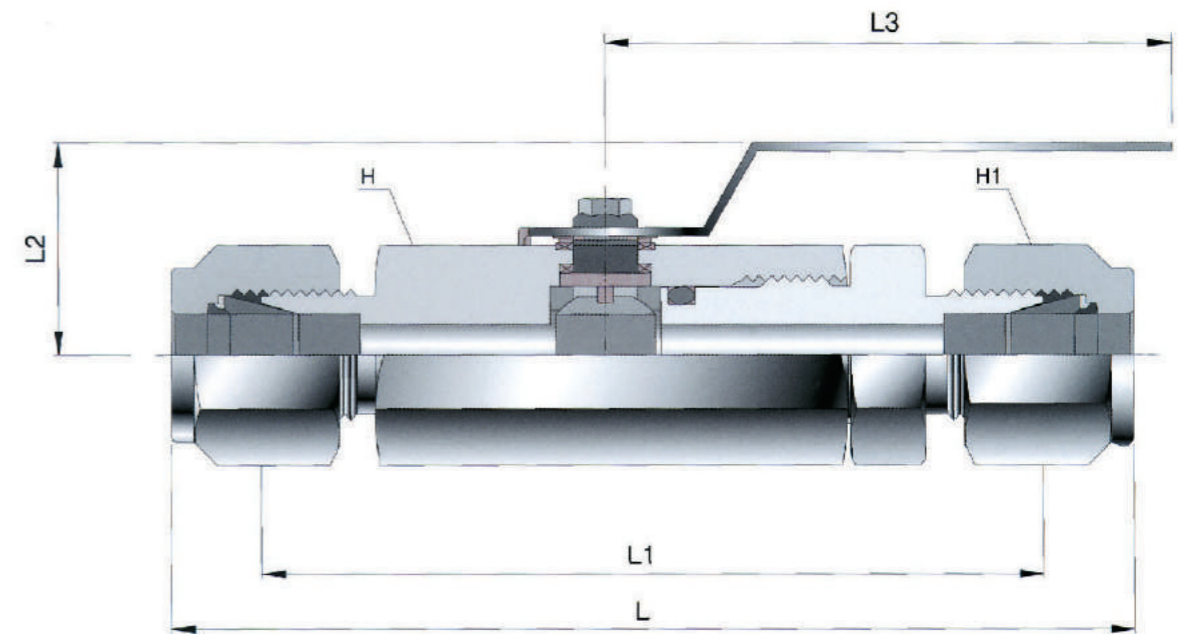
Application

- Fuel Lines, Refineries Chemical Plants, Steel Mills, Heavy Vehicles.

Materials of construction



Item	Part Description	Stainless Steel	Brass
1	Handle		SS304
2	Lock Nut		SS304
3	Washer		SS304
4	Washer		SS304
5	Outer Packing		Reinforced PTFE
6	Stem		SS316
7	Inner Packhg		Reinforced PTFE
8	Ball		SS316
9	Seat Ring		Reinforced PIPE
10	End Connector	SS316	Brass / B16
11	O-Ring		NBR
12	Body	SS316	Brass / B16



Ordering Information and Table of Dimensions

Basic Part No.	End Connections	Dimensions (mm)					Orifice (mm)	Weight (Kg)
		L	L1	H	H1	L2		
NBVD-6M	6mm D-LOK	79.5						0.14
NBVD-4T	1/4" D-LOK	79.5	31.0	17.4	14.2	60	5.0	0.14
NBVF-4N	1/4" FEMALE NPT	40						0.07
NBVD-10M	10mm O-LOK	90						0.23
NBVD-6T	3/8" D-LOK	90	40.0	22.2	17.4	80	7.5	0.23
NBVF-6N	3/8" FEMALE NPT	45						0.14
NBVD-12M	12mm O-LOK	99						0.36
NBVD-8T	1/2" D-LOK	99	42.0	26.9	22.2	80	9.0	0.36
NBVF-8N	1/2" FEMALE NPT	54.5						0.22
NBVD-16M	16mm D-LOK	109						0.51
NEWD-10T	5/8" D-LOK	109						0.51
NBVF 12N	3/4" FEMALE NPT	61	51.0	31.7	28.5	100	12.5	0.34
NBVD-12T	3/4" FEMALE NPT	110						0.57
NBVD-16T	1" D-LDK	134						0.87
NBVF-16N	1" FEMALE NPT	75	55.0	38.0	38.0	100	16.0	0.62

* All dimensions shown are for reference purposes only, are subject to change.